

1 10 puan

$\langle \vec{AC}, \vec{BH} + \vec{BA} \rangle = ?$

B 4 H 16 C

2 5 + 5 puan

A(3,4)
B(-2,1)
C(6,0)

$\vec{BC} - \vec{CA} = ?$

X=?

3 10 puan

B 4 D 8 C

$\triangle ABC$ eşkenar
 $\rightarrow \vec{BD} \cdot \vec{BC} = ? \quad \vec{BD} \cdot \vec{BA} = ? \quad \vec{BD} \cdot \vec{CA} = ?$

4 10 puan

$\vec{u} = 4\vec{e}_1 + 2\vec{e}_2$
 $\vec{v} = 3\vec{e}_1 - 4\vec{e}_2$

$x \cdot \vec{u} + y \cdot \vec{v} = 4\vec{e}_1 - 20\vec{e}_2$
 $\rightarrow x = ? \quad y = ?$

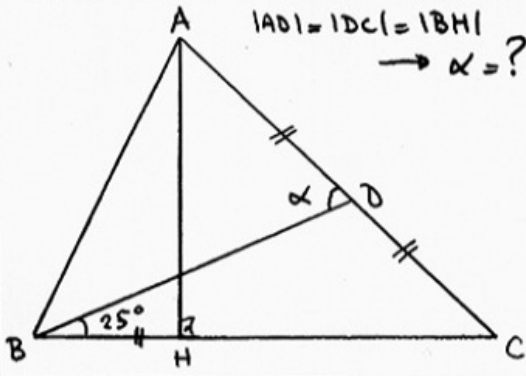
5 5 + 5 puan

$\vec{AO} + \vec{BO} + \vec{CO} = ?$

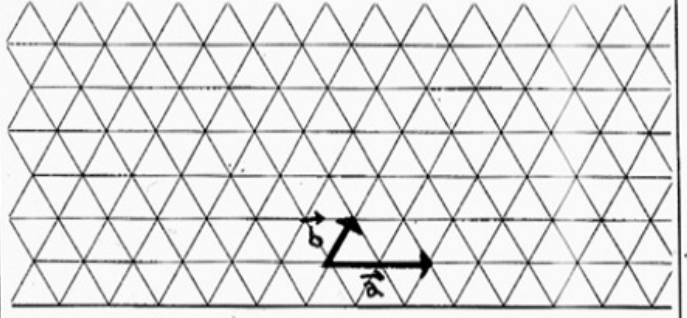
$|BC| = ?$

6

5 + 5 puan

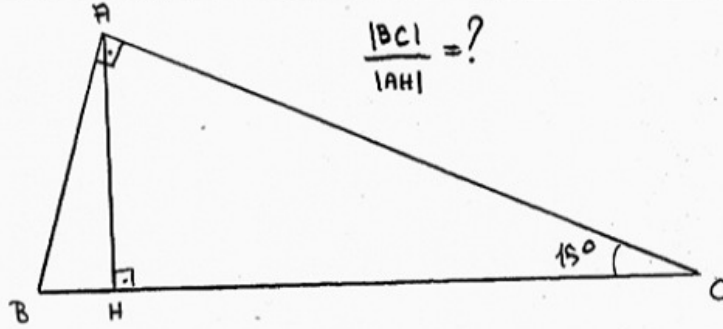


$2\vec{a} + 3\vec{b}$ ve $4\vec{b} - 3\vec{a}$ vektörlerini çizin.



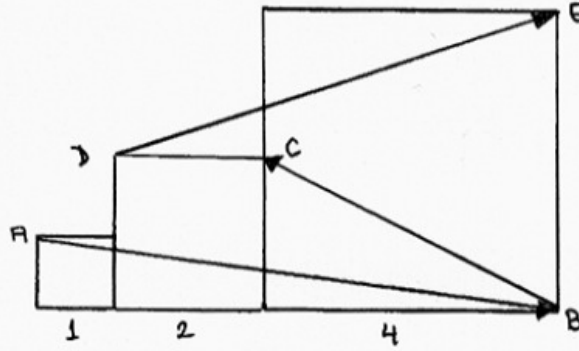
7

10 puan



8

10 puan



Karelerin kenar uzunlukları verilmiştir.

$\vec{AB} \cdot \vec{BC} = ?$ $\vec{AB} \cdot \vec{DE} = ?$

9

10 puan

- $\vec{a}, \vec{b} \in \mathbb{R}^2$
- $|\vec{a}| = 4, |\vec{b}| = 5$
- $|\vec{a} - \vec{b}| = 8$
- \vec{a} ve \vec{b} 'leri arasındaki açı θ ise;
- $\vec{a} \cdot \vec{b} = ?$
- $\cos \theta = ?$

10

10 puan

